



september : october : november 2014

HANA AND ARTHUR GINZBARG

# nature discovery center

## INSIDE THIS ISSUE

- 2 CENTER NEWS
- 3 SPECIAL EVENTS
- 4 CHILDREN'S PROGRAMS
- 5 FAMILY FUN
- 6 WALKS & TALKS
- 7 FALL BIRDING
- 8 SUMMER SCIENCE FUN
- 9 VOLUNTEER NEWS
- 10 DONORS
- 11 MEMBERSHIP

### DISCOVERY ROOM HOURS

NOON-5:30 DAILY  
CLOSED MONDAYS

### FREE ADMISSION

Donations are appreciated.  
Groups of six or more  
are served by appointment.


### MISSION

*To ignite lifelong curiosity,  
understanding, and respect  
for nature through education.*

[naturediscoverycenter.org](http://naturediscoverycenter.org)

 NatureDiscoveryCenter

 NatureDiscoCtr

 naturediscoverycenter

### nature discovery center

7112 NEWCASTLE  
BELLAIRE, TX 77401  
T 713.667.6550  
F 713.667.7654



## Something for Everyone this Fall

The staff of the Nature Discovery Center will provide you and your family a variety of opportunities to get out and explore nature in Russ Pitman Park and beyond this fall. We've planned classes just for children, walks for the whole family, a field trip for seniors, and more!

We're excited to spend this fall with you! Mark your calendars now so you can join the fun!

## Save the Dates!



### Pumpkin Patch (p 3)

2 Days of Fall Festival FUN.  
October 18 & 19 from 11 am to 4 pm



### 20th Twilight Gala (p 3) Turning a New Leaf

at the Houstonian Hotel  
November 21 at 6:30 pm



### Photos with Santa by John Daugherty Realtors

December 6 from 10 am - 1 pm

### Swift Night Out

Nature Discovery Center Sep 4 at 7:30 pm (p 7)

Lakeview Elem. in Sugarland Sep 12 at 7:30 pm (p 7)

**Park After Dark** Sep 19 & Oct 10 at 8:00 pm (p 5)

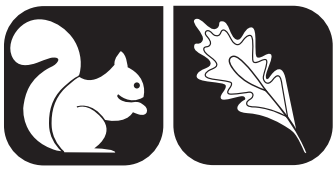
**Adult Lecture** Oct 1 at 7 pm (p 6)

**Tree ID Walks** Sep 6, Oct 4, Nov 1, Dec 6 at 10 am (p 6)

**Meet the Animals** Oct 4 at 10 am (p 5)

**Nature Walks on the Wild Side with Mary Ann**

Oct 12 & Nov 8 at 10am (p 6)



**Sarah Flournoy**  
Executive Director

## Staff

Mary Ann Beauchemin  
Maura Denman  
Eric Duran  
Anne Eisner  
Heather Pray

## Board of Directors

### Executive Committee

Lisa Derenthal  
*President*  
Ben Cowan  
*Vice President*  
Alex Tsui  
*Treasurer*  
Chris Copeland  
*Secretary*  
Aileen McCormick  
*Past President*

### Members At Large

Brenda Cauthen  
Lynda Clemmons  
David Franklin  
Steve Louis  
Jennifer Nelsen  
Craig Wooten

### Advisory Council

Cecilia Alatriz  
Robert & Jamie Allen  
Kathleen Ballanfant  
Kristin Berry  
Jane Dembski  
Maggie Farrar  
Marybeth Flaherty  
Winfred & Johnnie Frazier  
Terese T. Hershey  
Tom & Brenda Koch  
R. W. McKinney  
W. Ed Michna, Jr.  
Janie Mitcham  
Sumita Prasad  
J. Victor Samuels  
Cindy Siegel  
Elizabeth Blanton Wareing

## From the Director's Desk:

Hello, Friends—

Most of you reading this are from the crazy and crowded concrete jungle of Houston. You face traffic every day, mastering moves around construction, wrecks, and jams. You hear street noise from your own backyard—horns honking and trucks zooming by. Even the air can feel oppressive, hot and humid with a tinge of smog thrown in. But (I hope) you are generally happy to live in a place filled with culture, friends, and let's not forget—great restaurants.

The Nature Discovery Center improves our quality of life in Bellaire and greater Houston. It's a quiet green space where you can take a break from the frenetic pace of the City. It is a place where you can reconnect with the natural world. It's a place where the shade of canopy trees and the bubbling of the fountain seem to lower your blood pressure. Many people walk or drive right by, hurrying to their next destination. I guarantee you will have a better day if you take a quick detour through the Park. I've said it before, and I'll say it again, time spent in nature makes you happier, healthier, and smarter.

Though these peaceful walks through the Park have great value on their own, our programs enhance the Park even more. Try a guided bird walk to develop your powers of observation. Or attend a pre-school class with your child to learn how to promote curiosity and a love of discovery. Attend Pumpkin Patch with your whole family to enjoy good old fashioned fun! Maybe even Meet the Animals one morning and touch a snake or bearded dragon...

Whether you come to the Park to escape the busy-ness of your life or you come to learn directly about the natural world around you, we welcome you always.

Sincerely,

**Sarah Flournoy**  
Executive Director

## Volunteer Spotlight: Jim and Beth Murphy

Jim and Beth Murphy have been involved with the Park since its inception. Close-by neighbors, they began volunteering back when their children were young; now their kids are all grown up! You are likely to see Jim moving quickly through the Park with intention, whether he is hauling plants, helping band hummingbirds, or engaging in conversation with friends. You'll also notice Jim's curly hair and huge smile. Jim is a very important part of the Park, and he fits right in!

Jim is instrumental in the leadership of the Wednesday Willing Workers, our volunteer group that meets weekly to enjoy breakfast and coffee as well as hands-on work in the Park. The group manages the herb garden and the flower beds around the House. Next time you visit, please enjoy the colorful flowers and aromatic herbs and appreciate the time and energy these volunteers offer.



## Improvements to our Facilities and Grounds

You may have noticed our spruced up appearance at the Center. Thank you so much for the compliments about the new wallpaper, paint, bathrooms, furniture, and more. Next up: the landscaping around the Center!

The support of the community has been overwhelming, and we can't wait to replace our cracked surfaces, add more beautiful plants, enhance our outdoor animal area, include drainage on paths to keep your feet dry, and make the Center even more of a natural gem than it already is.

Our current plan has us breaking ground on these updates in November. Please check our website or Facebook for the most updated information, or call us directly. We know the construction may be a bit of an eyesore temporarily, but we have plans to make it as fun as possible and to keep disruptions to a minimum. (Kids! Make note: We may do a mini-engineering exhibit to coincide with the landscaping, and we're also discussing an orange cone decorating contest.)

Stay tuned for improvements ahead and help us ring in the next phase of life at the Nature Discovery Center.



*Continued  
on page 9 ...*



# special events

3



## Pumpkin Patch 2014

**Winner of the 2014 Macaroni Kid Gold Daisy Award  
for Best Fall Festival in SW Houston/Fort Bend County**

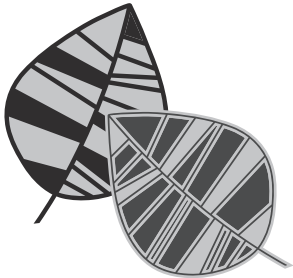


**Saturday & Sunday, October 18 & 19 from 11 am to 4 pm both days rain or shine!**

Hey Pumpkin Patch fans, October will be here soon! Russ Pitman Park will be transformed into a carnival like atmosphere with fun festival games for children, an inflatable Obstacle Course, the popular horse drawn wagons, tubs-of-fun ride, fall crafts, and more! Be sure to check out the jewelry, candles, and other wares being sold by different vendors as you enjoy our fall festival.

Don't forget to buy a fantastic pumpkin perfect for your porch! Pumpkin Patch provides fun for the whole family and supports the programs of the Nature Discovery Center. A win-win!

*See page 9 for information about volunteering at this year's Pumpkin Patch.*



## *Turning a New Leaf* **20th Annual Twilight Gala Benefiting the Nature Discovery Center**

**6:30pm Friday, November 21, 2014  
at the Houstonian Hotel**

Preparations for our 20th Annual Twilight Gala are underway! Please mark your calendar for our most important fundraiser of the year. Enjoy a fabulous evening with friends as you dance, dine, and bid high on very special auction items. Your support of this event will allow us to offer the finest nature education programs in our area and enhance our beautiful outdoor classroom.

Purchase your Twilight table by September 12, 2014 to be invited to our Underwriter Party on September 17.

### **Gala Co-Chairs**

Aileen & Andy McCormick

### **Auction Co-Chairs**

Eileen Shults  
Kristin Berry

### **Emcee**

Tom Koch, Channel 13 Anchorman

### **Host Committee**

Cathy & David Beathard  
Vicki & John Brentin  
Dr. Johnnie & Winfred Frazier  
Jeryl & Jeff Golub  
Brenda & Nick Lanza  
Pat & Bob Lunn  
Barbara & Don Ostdiek  
Marci Rosenberg & Ben Samuels  
Cindy & Bob Siegel  
Lynne Skinner

Visit [naturediscoverycenter.org/twilight](http://naturediscoverycenter.org/twilight) to see photos from last year, to learn more, and to purchase tickets and tables.

We are currently seeking auction items. Please email Heather Pray, [hpray@naturediscoverycenter.org](mailto:hpray@naturediscoverycenter.org), if you have a donation for our live or silent auctions.



*Long time supporters Diane McLaughlan,  
and Winfred & Johnnie Frazier enjoying  
The Wild Life at Twilight 2013.*

*Photo courtesy of Michelle Watson,  
CatchLight Group.*

### **Early Gala Supporters as of August 15**

#### **Live Oak \$10,000**

Aileen & Andy McCormick

#### **Southern Magnolia \$5,000**

Pat & Bob Lunn

#### **Cherry Laurel \$2,500**

Brenda & Greg Cauthen  
Cathy & David Beathard  
Bellaire Young Mothers  
John Carlross /  
Venetian Blind Carpet One  
Chris Copeland  
Lisa & Steve Derenthal  
Eurocar-Werk  
Gimmel  
Brenda & Nick Lanza  
Laura & Steve Louis  
Debbie & Chris Patton  
Tradition Bank  
Wednesday Willing Workers

#### **Other Early Supporters**

Claire Caudill  
Dana Levy Germain  
Steven Ginzburg  
Betsy & David Green  
Mary & Carl King  
Beth & Tim Logan  
Janet Mehlhoff  
Sandra & Ralph Weaver





# children's programs

4



Mr. Eric and one of his Curious Kids stop to make a discovery in the Pocket Prairie.

## FREE PROGRAM

### Nature Story Time

Stories, puppets, specimens, songs & more for preschoolers & their caregivers.

**Every Wednesday at 4 pm**

## PLAYDATE IDEA?

### Tour the Park & Discovery Rooms

Schedule a play date for your child's playgroup. **Play Date in the Park** packages may include Discovery Room tours, nature walks, themed activities, stories and songs in a 30 - 45 minute program specially geared for your group.

Play group visits are scheduled Tuesday - Sunday between 9:30 am - 4:30pm.

**Advanced reservation is required.**

\$8 per child (\$40 minimum)

Call us at the Center at 713.667.6550 to schedule.

## Fall Children's Classes with Mr. Eric

Sign-up for individual classes that meet your hectic schedules, or for topics that inspire your children! *To become a Member before registering, visit [www.naturediscoverycenter.org/join](http://www.naturediscoverycenter.org/join)*  
*To register for classes, visit [www.naturediscoverycenter.org/classes-camps](http://www.naturediscoverycenter.org/classes-camps)*

### Curious Kids

**Ages: 3.5 - 5 years old with adult**

Preschoolers and their parents or adult caregivers will learn basic science concepts in hands-on classes that encourage and celebrate natural curiosity! Curious Kids lessons may incorporate live animals, plants, natural objects, crafts, puppets, stories, songs, and nature walks.

**Cost per Class:**

\$10 Member

\$18 Non-member

**Members-Only Semester Discount**

**Price: \$120**

**Tuesdays - 10 am - 11:15 am**

**Dates & Topics:**

09/09 - Plant Power  
09/16 - Plants As Food  
09/23 - Plants and Animals  
09/30 - Fun With the Sun  
10/07 - What Is an Animal?  
10/14 - Animals With Bones  
10/21 - Animals in Autumn  
10/28 - Bats and Moths  
11/04 - Slimy Animals  
11/11 - Animals With Shells  
11/18 - Beach Creatures  
*Thanksgiving Holiday*  
12/02 - Texas Animals  
12/09 - Animals in Winter  
12/16 - Wintertime Crafts



### Junior Scientists

**Ages: 6 - 10 years old**

Our Junior Scientists explore the natural world and examine a variety of science themes through hands-on investigations and experiments, and in lessons enriched with crafts, games, and more!

**Cost per Class:**

\$12 Member

\$18 Non-member

**Members-Only Semester Discount**

**Price: \$144**

**Thursdays - 4 pm - 5:30 pm**

**Dates & Topics:**

09/11 - Plants of the World  
09/18 - Where Does Food Come From?  
09/25 - Plants and Animals  
10/02 - The Sun and the Stars  
10/09 - What Is an Animal?  
10/16 - Animals With Bones  
10/23 - Animals in Autumn  
10/30 - Animals in Dark Places  
11/06 - Slimy Animals  
11/13 - Animal Defenses  
11/20 - Creatures of Beach & Shore  
*Thanksgiving Holiday*  
12/04 - Texas Animals  
12/11 - Animals in Winter  
12/18 - Fun Science Experiments



**If you have a group of 5+ kids (5-10 yrs old), you can request a class, or a series of classes on most nature/science topics. Call Staff Naturalist, Eric Duran at 713.667.6550 for more info.**

## Winter Break Camps

**Ages 5 - 10**

One day camps meet from 9:30 - 3:30 each day, with optional After Care until 5:30. Kids bring a lunch and we provide snacks and water.

**Register online.** Members - login as the child who will be coming to camp.

**Cost/day:** \$40 member / \$50 nonmember

**After Care/day:** \$10



## Winter Break Camp Dates

Monday, 12/22

Tuesday, 12/23

Monday, 12/29

Tuesday, 12/30

*Camp topics will be announced this fall. Look for our camp announcements on our website, on Facebook, and in your email, and register for our winter camps online later this fall.*







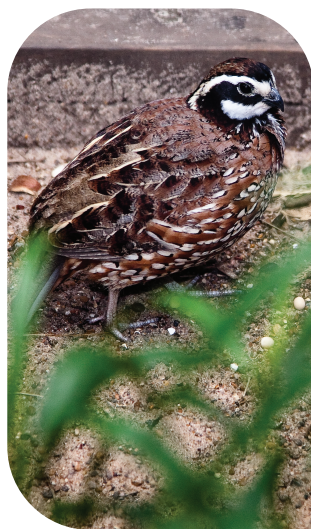
Register  
SOON!



Photo by  
Richard Burton



*Eastern Screech Owls are the stars of the show during our Park After Dark Owl Prowls.*



*Visitors of all ages love to stop and watch our Bob White Quail, while they are out in Russ Pitman Park. You can spend a little time getting to know our quail even better during our October 4 Meet the Animals.*



## Fall Park After Dark Walks Announced Join Us on a Family Friendly Night Hike!

Come learn about the animals that are out and about in Russ Pitman Park once the sun goes down. Bring your family and join us for a guided night walk through the park. **These night "hikes" are perfect for adults and children ages 4 and up.**

**Our night walks begin at the Nature Discovery Center.** Programs include an introduction to the animals we are likely to find and the best ways to find them, followed by a guided exploration through the park.

**Cost:** \$5/person

**Reservations required.** Visit [www.naturediscoverycenter.org/night-hike](http://www.naturediscoverycenter.org/night-hike) to sign up.

**Bring:** Mosquito repellent and a flashlight (for adult use ONLY).

### September 19, 8:00 pm: Nocturnal Animals

Join us as we try to spotlight some of our nocturnal friends. We will explore the park to find out who is out at night, where they are, and what sounds they make.

### October 10, 8:00 pm: Owl Prowl

Owl prowls are always fun and very popular! Come learn about the owls that have been seen in our park and look for the ones that might want to be seen tonight. Sign up soon, our owl prowls fill up!

## Meet the Animals Saturday Morning

Spend a Saturday morning at the Center getting to know our animals with up close and personal animal encounters! Each family friendly Meet the Animal session includes: hands-on exposure to live animals and/or specimens, an informal discussion about the animal's basic biology and behavior, and a question and answer period with one of our Staff Naturalists. Some sessions may also include surprises like opportunities to feed the animals or guest appearances by animals not usually seen in our Discovery Rooms.

**Saturday mornings at 10 am**

**Upcoming Dates:**

**October 4 - Our Feathered Friends**

**Cost:** \$5/person

**This is a drop-in program. Advanced registration is not required.** As a courtesy, please call us at 713.667.6550 if you know you plan to come with a group of 6 or more.

## A Walk on the Wild Side! with Mary Ann Beauchemin

Come explore and learn more about the wild side of nature in the city with our fun, family friendly nature walks in Russ Pitman Park. Join us while we sneak up on lizards, peer through a spotting scope for close up looks at honey bees or birds, discover the latest blooms and their pollinators in our Pocket Prairie, spy on the secret life of animals that hide under logs, and investigate more seasonal nature surprises! Learn some tips to explore nature with your family in your own backyard or on your travels. Walks are about an hour long.

**Upcoming Dates:**

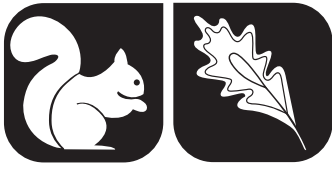
**Sunday, October 12, 10 am**

**Saturday, November 8, 10 am**

**Cost:** members - FREE  
nonmembers - \$5/family

**Meet:** at the front porch

**Registration is not required.** As a courtesy, please call us at 713.667.6550 if you plan to come with a group of 6 or more.



## Tree Identification Walks

**Saturdays,  
10 am to 11 am**



**Dates:** September 6,  
October 4, November 1,  
December 6

Interested in learning how to identify local trees? Jim McKee, a Master Naturalist, tree lover, and bird watcher will once again be leading tree identification walks in the park each month this fall. Jim shares lots of interesting information and historical facts about the many species of trees we have in Russ Pitman Park and teaches you how to identify them. You might even have some of the same kind of trees in your own yard. Come learn more about them. Join us for one or all of the walks!



Be on the lookout for these and other fall blooming plants in the park. Top - Ironweed, Bottom - Spot Flower. Photos courtesy of Don Verser.

## Free Adult Lecture

**Wednesday, October 1 at 7 pm**

**Saving Our Wildlife: Wildlife Conservation Efforts at the Houston Zoo**  
with Joe Flanagan, DVM, Chief Veterinarian, Houston Zoo

The conservation team at the Houston Zoo works tirelessly to help save a variety of endangered and imperiled native Texas animals. Join the Zoo's Chief Veterinarian, Joe Flanagan, for a fascinating talk about the Zoo's efforts, through breeding programs and field work, with Texas Sea Turtles, Attwater's Prairie Chicken, and Houston Toads.

*Joe Flanagan graduated from the Iowa State University College of Veterinary Medicine in 1982. After graduation, he trained at Omaha's Henry Doorly Zoo until he began work as a veterinarian at the Houston Zoo in December 1982. He is currently the Chief Veterinarian at the Houston Zoo, where he is responsible for the healthcare of 6000 animals ranging from invertebrates to great apes. He is a member of the American Association of Zoo Veterinarians and served as its president in 2005. Flanagan received the Environmental Hero Award from the National Oceanic and Atmospheric Administration in 2000 for volunteer work in the recovery of Kemp's Ridley sea turtles in the Gulf of Mexico.*



Photo courtesy of Houston Zoo

## Monday Morning Gardening

Interested in gardening? Want to learn more about native plant gardening, non-native invasive species and help us care for the park at the same time?

Join us on the first Monday of the month, starting in October when the weather cools down a bit, for some light gardening and help us care for the park. We'll be removing some invasive species, growing out & planting natives, watering recently planted plants and more.

- No experience necessary. Experienced staff will work with you & guide you through projects.
- Come dressed for the weather and prepared to get dirty.
- Bring your own gloves and gardening gear or use ours.

Please contact Mary Ann Beauchemin, our Park Steward, in advance if you are interested in coming or have any questions.  
mbeauchem@naturediscoverycenter.org



Note: If you are interested in volunteer gardening, but cannot make it on the dates below, contact Mary Ann. Perhaps you can help on another day!

**October 6, November 3, &  
December 1  
from 9:30 am to Noon**

## Bellaire Garden Club Monthly Meetings

**First Thursdays at 7:00 pm**

The Bellaire Garden Club holds their monthly meetings at the Nature Discovery Center. Everyone is invited!



## Annual Members Meeting

**Wednesday, December 3 at 6:30 pm**



Join us for a cup of cider and some winter cheer at the annual meeting to learn what the Center has been doing this year and to hear some of our plans for next year. Meet and vote on the slate of officers for our 2015 Board of Directors.

**This is a Members-only event**, and we look forward to sharing the evening with our favorite people!



# fall birding

7

## Smith Point Hawk Watch Birding Trip for Senior Members

**Friday, September 26,  
8 am – 6 pm**

**This popular trip is now FULL.** Please join the Wait List for it online. There are often a few cancellations as the trip date nears.

[www.naturediscoverycenter.org/hawk-watch](http://www.naturediscoverycenter.org/hawk-watch)



## Nature Discovery Center Co-sponsors Family Friendly 'Swift Night Out' Events

If you missed the Swift Night Out Events we held at Whole Foods Market/Pershing Middle School or at Kleb Woods in August, don't worry. There are still two more Swift Night Out Events yet to come! Join us as we help count the swelling numbers of chimney swifts migrating through Houston area at our towers here in Russ Pitman Park and at a chimney in Sugar Land. We will watch chimney swifts swoop and soar over their roost and count them as they enter their chimney for the night.

Bring a folding chair if you prefer to sit down and mosquito repellent! Binoculars are optional (the swifts are visible with the naked eye as they enter the chimney). For more details and updates, see [www.naturediscoverycenter.org](http://www.naturediscoverycenter.org).

### Thursday, September 4 - Swift Night Out at the Nature Discovery Center

Meet at 7:30 pm in front of the Nature Discovery Center for special activities and information about chimney swifts just before the count. The Nature Discovery Center will provide light snacks and drinks. The great advantage of this site is that the chimney swifts fly low - right over your head - and they are easy to get a good look at!

*Co-sponsored by the Nature Discovery Center and Houston Audubon Society.*

### Friday, September 12 - Swift Night Out at Lakeview Elementary in Sugar Land

Meet at 7:30 pm at Lakeview Elementary, 314 Lakeview Dr., Sugarland, 77498, for special activities and information about chimney swifts. Last fall there were over 1,100 swifts roosting at Lakeview Elementary! Whole Foods Market-Sugarland will be providing refreshments.

*Co-sponsored by the Nature Discovery Center and Houston Audubon Society, Whole Foods Market-Sugarland, and Lakeview Elementary School.*

## Swifts Over Houston



Who doesn't love a bird that eats mosquitoes! **Every Tuesday evening at dusk, through late October**, a team of volunteers count Chimney Swifts as they enter chimneys to roost for the night. Please drop in and join us!

### Count Locations:

1. **SW corner of the Whole Foods Parking Lot**, 4004 Bellaire Blvd, Houston TX
2. **Parking lot on the north side of Pershing Middle School**, entrance off of Stella Link.

## Lunch with the Birds Begins in September

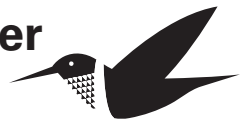
**Wednesdays, Noon to 1 pm**

Interested in birdwatching? Whether you are a novice or an expert, join our free guided bird walks through Russ Pitman Park.

Warblers, vireos, thrushes, flycatchers, orioles and buntings are just a few of the types of fall migrants you may see. If you bring your lunch, plan to eat it before or after the walk.

**Dates:** September 17 through November 5  
**Where:** Meet us on the front porch. Just drop in!  
**Bring:** binoculars.

## Monthly Winter Bird Walks



**Wednesdays, Noon to 1:15 pm**

Mary Ann Beauchemin will lead a monthly bird walk in Russ Pitman Park throughout the winter. In addition to our winter songbirds we have had some interesting "migrants" overwinter in the past. Most years have some very interesting hummers visiting the park. Last year we had several Rufous, and a few Calliope and Black-chinned Hummers!

**Dates:** December 3, January 7, & February 4  
**Where:** Meet us on the front porch. Just drop in!  
**Bring:** binoculars.

**Just  
ask!**



We keep binoculars on hand at the Center for visitors to borrow while birding in Russ Pitman Park. Call ahead to check availability.





# summer science fun

8

## Ms. Anne's Summer Outreach Programs Are in High Demand!

Ms. Anne took science shows on the road to libraries, day care and learning centers, and summer camps throughout the Greater Houston Area and beyond this summer.

Barbara Bush Library  
Becker School  
Bellaire Meth. Power Camp  
Bellaire Library  
Bracewell Library  
Carnegie Library  
Children's Courtyard  
Spring  
The Woodlands  
Faith Lutheran  
Flores Library  
George Memorial Library  
Girls Inc. Camp  
Heights Library  
Heights Preschool  
High Meadows Library  
Johnson Library  
Knox Memorial Library  
LoneStar College CyFair  
McCrane Kashmere  
McGovern Stella Link Library  
Meyer Branch Library  
Missouri City Branch Library  
Montessori Learning Beechnut  
Morris Frank Library  
Pace Prep  
Pasadena Learning Center  
Phoenix Academy  
Pleasantville Library  
Robinson-Westchase Library  
Shepherd-Acres Homes  
Smaller Scholars  
Smith Library  
St. Mark's Lutheran  
St. Nicholas School  
St. Andrews Presbyterian  
Stanaker Library  
Stimley Blueridge Library  
Tuttle Library  
Tyra Library  
UOS Goldberg Montessori  
UT Child Development Center  
Vinson Library  
West University Methodist  
Young Library  
Camp Buckaroo/Easter Seals  
Shepherd of the Heart,  
Pearland  
St. John the Divine  
Sugar Creek Baptist  
UMC, The Woodlands

## Thank You for a Sold Out Summer of Science Camps & Sneak-a-Peek Classes!



## Don't Miss Our Fall Classes & Winter Break Camps!

Members enjoy savings on all classes and camps. Join in the savings and join in the fun today! Visit [www.naturediscoverycenter.org](http://www.naturediscoverycenter.org) to join, to browse our fantastic fall lineup of activities and events, and to register for programs today.



## Special Thanks to ...

**Charles Pressler** for replacing our playground area picnic tables as his **Eagle Scout Project**. And to Troop 16 for donating funds for the lumber.

**Dr. Cin-Ty Lee** for teaching another Shorebird Workshop and field trip to benefit the Nature Discovery Center.

**Terrell Sword & Sword Plumbing** – for cleaning out and training staff to clean recycling tanks for *Terrell's Springs* – the bubbling rock fountain he put in for us last summer/fall!

**Don Verser** for maintaining our beautiful Pocket Prairie and other areas in the park and for repairing the water level problem in our shady wetlands.



## Volunteer for Pumpkin Patch

**Friday, October 17 -  
Pumpkin Unloading  
4 pm to 5 pm**

**Saturday & Sunday,  
October 18 & 19  
Event shifts from:  
8:30 am to 10:45am,  
10:45 am to 1:45 pm,  
1:30 pm to 4:30 pm**

Scout groups, school clubs, service organizations, families and individuals all make great volunteers for this annual event. We need people to help with set up, clean up, and a variety of activities during the event. Contact Anne Eisner at 713.667.6550 for more information about volunteering at this event. Email Anne at: [aeisner@naturediscoverycenter.org](mailto:aeisner@naturediscoverycenter.org)

## Summer Quarter Volunteers

### Animal Care

Hannah Radcliffe  
Jonathan Radcliffe  
Dana Shay  
Jaka Tanugraha  
Cate Urbani  
Mary Grace Urbani

### Aviary Care

Ellen Hastedt  
Dr. Dan Jordan

### Discovery Room Docent

Kathleen Connell  
Nicholas Echeverri  
Jack Sullivan  
Alex Lee  
Alex Lewis  
Angela Liu  
Bravyn Lu  
Eli Melendre  
Anna Rosenfeld

### General Handymen

Gary Gray  
Terrell Sword & Sword Plumbing

### Park & Plant Care

Ronnie Renick  
Don Verser  
John Willis  
Lijin Zeng

### Park Project Consultation

David Black  
Gary Gray  
Carol & Richard Phillips

### Shorebird Workshop

Dr. Cin-Ty Lee  
Mark Kulstad  
Tim Perkins

### Sneak-a-Peek Assistants

Allison Clark  
Sammy Eldin  
Peggy Horn  
Emily Kernell  
Leslie Medina  
Hattie Meehan  
Gabriella Mendoza  
Isabella Passamano

### Summer Camp Counselors

Jake Beinhart  
Kyle Biedermann  
Jasmine Campuzano  
Teresa Datta  
Katherine Davies  
Joey Englehart  
Amara Ghorbani  
Brett Hauser  
Maya Kanani  
Nina Kim  
Sophia Kontos  
Lauren Li  
Stanley Lopez  
Rachel Lu  
Carrie Meng  
Ali Niefeld  
Isabella Passamano  
Katherine Powers  
Christina Ru  
Jack Sullivan  
Priscilla Trevino  
Maya Venkateswaran  
Kehvi Wang  
Stacey Yard

### Summer Group Guides

Myra Acevedo  
Sara Colburn  
Sara Colburn  
Jazmin Galvan  
Carson Gartner  
Catherine Groff  
Leigh Gonik  
Sammy Eldin  
Marlon Guerrero  
Elyse Hanse  
Jamie Hassell  
Antonia Iyer  
Eli Maieron  
Lauren Sonik  
Erika Vinette  
Muyao Zhou

### Summer Watering in the Park

Georgia & Brandye Drager  
Hayden & Catherine Hanslik  
Hillery Keith  
Ethan Pham  
Gaby & Mary Ann Yabut

### Wednesday Willing Workers

Norma Barnes  
Fred Campbell  
Marcelle Daniel  
Beth Debenport  
Beth Murphy  
Jim Murphy  
Debbie Patton  
Michael Patton  
Pat Roberts  
Nora Wolff

## Volunteer Spotlight *(Continued from Page 2)*

Jim serves as the Chairman of the Bellaire Garden Club's annual plant sale. The plant sale takes place in the spring at the Nature Discovery Center, and frequently the Club will reinvest its sale earnings into the Park. At home, Jim and Beth propagate many plants for the sale, and they are valuable resources at the sale itself, providing advice on soil and sun conditions needed to make a variety of plants thrive. Jim enjoys learning about and growing native plants, in particular. He believes in the native plant restoration we are doing in the Park and loves seeing the excitement on kids' faces when they discover insects on one of our many plants!

Beth established the herb garden in our back pavilion area, and she remains a member of the Herb Society of America to this day. The herb-themed discovery box was designed by Beth, and both Jim and Beth share their knowledge of herbs and other herbaceous plants at our annual Spring Fling. Recently, Beth also led the charge during our Whole Food Market volunteer day; young volunteers planted many wildflower seeds, which we grew and then planted in the Park.

When you look around the beautiful grounds at the Nature Discovery Center, it is likely Jim and Beth had a hand. We are fortunate for their involvement and thank them for sharing their time—and for sharing our passion for plants!





*The Hana and Arthur Ginzburg Nature Discovery Center is most grateful to the following corporations, foundations, and individuals for their generous support between August 15, 2013 and August 15, 2014:*

*\* denotes In-Kind donations*

## **Discovery Circle \$15,000**

The Cullen Foundation  
The Fondren Foundation  
George & Mary Josephine Hamman Foundation  
Harris County Commissioner, Precinct 3  
Steve Radack  
Houston Endowment Inc.  
The Wortham Foundation

## **Investigator Circle \$10,000**

ACME Party & Tent\*  
The Brown Foundation, Inc.  
The Albert & Ethel Herzstein Foundation  
Andy & Aileen McCormick Family Fund  
The Powell Foundation  
Seay Foundation

## **Explorer Circle \$5,000**

Bellaire Young Mothers  
John & Bridgette Goss  
Bob & Pat Lunn  
Chris & Debbie Patton  
Russ Pitman  
Samuels Foundation  
Whole Foods Market-Bellaire

## **Wildlife Benefactor \$1,000**

Dr. Robert & Mrs. Jamie Allen  
Kelly Apple & Jason Orsak  
Brent & Julie Bersin  
Greg & Brenda Cauthen  
Centerpoint Energy  
Lynda Clemmons  
James & Christiane Copeland  
Lisa & Steven Derenthal  
Don's Tree Service  
Lynn & Marilyn Elliott  
Eurocar-Werk  
Dan & Ruth Flournoy  
John Flournoy  
Dr. Cullen Geiselman  
Gimmel  
Jeffrey & Jerry Golub  
Charles R. & Tracy Hallenberger  
Jacob & Terese Hershey Foundation  
Chap & Ethel Hutcheson  
Brenda & Nick Lanza  
Christine & Mark Laskin  
Locke Lord, LLP  
Stephen Louis  
Mark Lowes & Kimberly Godfrey Lowes  
Jennifer Nelsen  
Lee Norris & Linda Steen Norris  
K. Cody & Kusum Patel  
Richard Phillips, Jr. & Carol Phillips  
Prosperity Bank  
Reliant Energy Charitable Foundation  
Silver Eagle Distributors L.P.  
Lynne Skinner  
Sword Plumbing Company\*  
Jill & Charles Talisman  
Alex & Amy Tsui  
Venetian Blind & Floor Carpet One

## **Wildlife Guardian \$500**

Councilman James Avioli, Sr.  
& Mrs. Dee Avioli  
David & Cathy Beathard  
Lewis & Shelley Brazelton  
Nigel & Cherry Curlet  
Marlin & Marla Downey  
Exxon Mobil Foundation  
Tom & Marybeth Flaherty  
Wayne & Patsy Fox  
Dr. Johnnie & Mr. Winfred Frazier  
Dana Germain  
Steven Ginzburg  
Carter & Mary Groves  
Terese Hershey  
William & Cynthia Hutz  
Carl & Mary King  
Thanos & Lucinda Kontos  
Randy & Kathy Lake\*  
Nikky Lawell  
O. Clayton & Rebecca Lilienstern  
Tim & Beth Logan  
The Meyer Foundation  
Jimmy & Jennifer Murchison  
Buck & Jacque Ogilvie  
Laurie & Bradley O'Halla  
Ernie & Lucy Seward  
Shell Oil Company Foundation  
Cynthia & Robert Siegel  
Don Verser  
Village Plumbing & Home Services  
Louis Waters, Jr. & Geraldine Waters  
Robert & Edith Zinn

## **Wildlife Supporter \$250**

Mike Alsup  
Mary Ann Beauchemin & Gary Gray  
David & Betsy Black  
Van & Bridget Burkhardt  
Buck & Sally Chapoton  
Virginia Clark  
Joe & Susie Dilg  
T. Kevin & Susan Golden  
Greater Houston Community Foundation  
David & Mary Green  
Greenleaf Gardening Services, Inc.\*  
Michael & Susan Hawes  
Leslie & Mark Hull  
Jessica Jubin  
Mavis & Wendy Kelsey  
David & Linda Knowles  
Jason & Norri Leder  
Pamela Lewis & Chris Collins  
Jessica Lozano  
Pat & Diane McLaughlan  
MinuteMan Press of Bellaire  
Judy & William Murphy, Jr.  
Donald & Barbara Ostdiek  
Dr. Charlene & Mr. Scott Owens  
Dr. Ben & Mrs. Cookie Portnoy  
Barbara Raines  
Judy & Marty Reiner

Robyn Rothman  
Beverly & Ellis Rudy  
Will & Maggie Stacy  
Dr. Ralph Weaver, Jr.  
& Mrs. Sandra Weaver  
David & Karen Wolf

## **Event Support Family Nature Nights Goodman Financial**

## **In Memory Of**

**Hana Ginzburg**  
Terese Hershey

*The Nature Discovery Center relies on contributions from the community in order to continue offering quality science and nature programs to children and families throughout the Houston area.*

*We thank you all for your support!*



**We invite you to join us in maintaining the Nature Discovery Center's place as a unique, natural learning environment by making a gift.**

**For more information, contact Heather Pray, Director of Development, at 713.667.6550 or [hpray@naturediscoverycenter.org](mailto:hpray@naturediscoverycenter.org)**

**To make a tax deductible donation to the Center today, visit us online [naturediscoverycenter.org/support](http://naturediscoverycenter.org/support)**





# membership

11

## New & Renewing Members

*The Nature Discovery Center is pleased to welcome the following new and renewing members for the Summer Quarter from May 15, 2014 to August 15, 2014.*

### Wildlife Guardian \$500

Caroline Smith & Abigail Micu

### Wildlife Supporter \$250

Marcy & Gerald Brown

### Wildlife Partner \$100

Brent Bersin  
Sarah & Adam Davidson  
Steve Gordon & Denise De La Cruz  
Kate & Peter Hays  
Hanna Hepp & Joseph El-Azzi  
Karen Hibbard  
Kristin & Todd Janicek  
Sarah & Charlie King  
Sacha Lazarre  
Song Li  
Amy Malphrus  
Alyson & Ryan McConnell  
Heidi & Alan McPherson  
Edith Santiago  
Meredith & Brad Segal  
Rona Sonabend  
Elvia & Reynaldo Uresti  
Joyee & Sameer Vachani  
Karrie & Richard Wheatley  
Andrea Winard

### Family \$50

Nabil Ahmed  
Irina Beatty  
Candice & Brandon Bedingfield  
Jeannine & David Bergt  
Monica Bowes  
Audrey & Ari Burgess

Cherie Coco  
Laura Conley  
Stefanie Cousins  
Geeta & Piyuse Das  
Kelly & Julian Dent  
Lisa Derenthal  
Gene Doggett  
Stephanie Drumgoole  
Suzanne & Neil Hanchard  
Nassim Hatami-Brinkley  
Susan & Michael Hawes  
Shweta & Satyajit Khade  
Debra & Darayus Kolah  
Lindsay Ladenburg & Terri Barazzas  
Jetta & Roy Neely  
Anh-thuy Nguyen & Russell Hall  
Allison Nisbet  
Rene Nutter & Cynthia Walsh  
Janet & Bryan Pate  
Catharine Perry  
Lori Peters & Eric Johnstone  
Sally & Howard Phillips  
Tiffany & Brett Podolsky  
Pamela & Chase Randle  
Deirdre & Peter Rozowski  
Karl & Jane Schulz  
Gopi Shah  
Erin Furr-Stimming, MD  
Anoushka Tandon  
Renee & Richard Thomas  
Vanessa Wegner & Martin Fuller  
Heather Westendarp  
Nancy Wilson

### Individual \$30

Charles Brasier  
Becky Galloway

### Student/Senior \$25

Kurt Brown  
Fred Campbell  
Claire Caudill  
Cynthia Edmondson  
Twilight Freedman  
Deborah Lancaster  
Carolie Martin  
Janet Neath  
Jan Rose  
Margaret Swarts  
Susan Schultz

### Family Members & Higher

... receive discounts on classes, camps, and field trips.

### Wildlife Partners & Higher

... have pavilion reservation privileges for parties

## Membership and Gift Form

To become a member online visit [naturediscoverycenter.org/join](http://naturediscoverycenter.org/join).

|   |       |   |        |      |  |     |  |
|---|-------|---|--------|------|--|-----|--|
| Name  |       | Address                                   |        | City |  | Zip |  |
| <hr/>   |       |   |        |      |  |     |  |
| Phone   |       | Email                                     |        |      |  |     |  |
| <hr/>   |       |   |        |      |  |     |  |
| <input type="radio"/> Student/Senior  | \$ 25 | <input type="radio"/> Wildlife Guardian   | \$ 500 |      |  |     |  |
| <input type="radio"/> Individual  | 30    | <input type="radio"/> Wildlife Benefactor | 1,000  |      |  |     |  |
| <input type="radio"/> Family  | 50    | <input type="radio"/> Explorer Circle     | 5,000  |      |  |     |  |
| <input type="radio"/> Wildlife Partner  | 100   | <input type="radio"/> Investigator Circle | 10,000 |      |  |     |  |
| <input type="radio"/> Wildlife Supporter  | 250   | <input type="radio"/> Discovery Circle    | 15,000 |      |  |     |  |
| <input type="radio"/> Enclosed is my matching gift form. My employer's name is: _____ |       |   |        |      |  |     |  |

Will your employer match your tax-deductible dues and gift?



HANA AND ARTHUR GINZBURG

## nature discovery center

7112 NEWCASTLE ST  
BELLAIRE, TX 77401

CHANGE SERVICE REQUESTED

NON-PROFIT ORG.  
U.S. POSTAGE  
PAID  
BELLAIRE  
TEXAS 77401  
PERMIT NO. 356



**Walks & Talks**  
*page 4*

**Fall Birding  
Opportunities**  
*page 7*

**2 Days of Fall  
Festival Fun!  
Pumpkin Patch**

Saturday & Sunday  
October 18 & 19  
11 am - 4 pm

# Fall Activities



*Turning a New Leaf*  
**20th Anniversary  
Twilight Gala**



Friday  
November 21  
6:30 pm  
Houstonian Hotel

**Fall Classes  
for Children**  
*page 4*

**Family Fun**  
*page 5*

**Summer Collage**  
*page 8*

